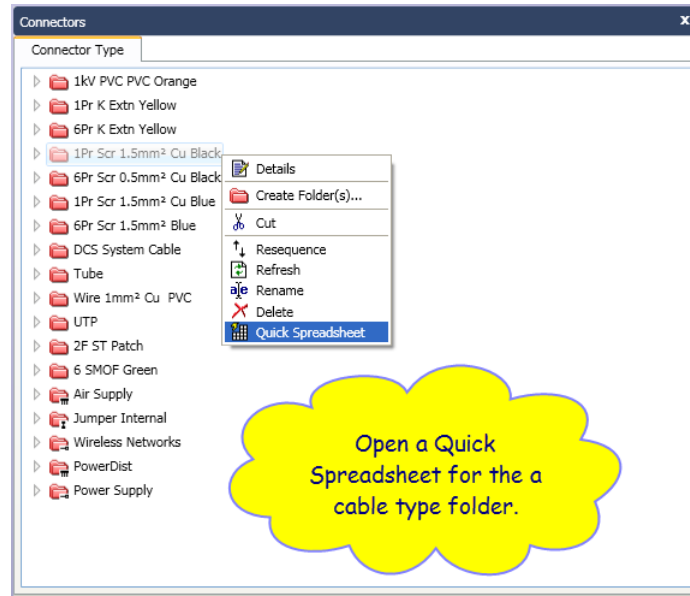


MTO FOR CABLE

Cable quantities must be assessed by counting the total for each type of cable in the cables schedules which is a time-consuming task.

The totals for cables are instantly obtained in DAD as follows:

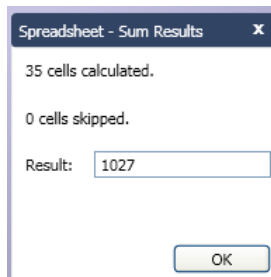


Connectors Spreadsheet

| Name | From | To | Length (m) |
|-------|------------------------------|------------------------------|------------|
| J1001 | Field\Plant A\JB-101 | Field\Plant A\PDT-101 | 3 |
| J1002 | Field\Plant A\JB-101 | Field\Plant A\LT-100 | 44 |
| J1003 | Field\Plant A\JB-101 | Field\Plant A\LV-100\LY-100 | 25 |
| J1004 | Field\Plant A\LV-100\JB-102 | Field\Plant A\LV-100\SV-100 | 20 |
| J1005 | Field\Plant A\LV-100\JB-102 | Field\Plant A\LV-100\ZSO-100 | 25 |
| J1006 | Field\Plant A\LV-100\JB-102 | Field\Plant A\LV-100\ZSC-100 | 25 |
| J1018 | Field\Plant A\TT-109 | Field\Plant A\JB-101 | 25 |
| J1019 | Field\Plant A\JB-103 | Field\Plant A\FT-110 | 15 |
| J1020 | Field\Plant A\JB-103 | Field\Plant A\FT-111 | 20 |
| J1021 | Field\Plant A\JB-103 | Field\Plant A\TT-104 | 25 |
| J1022 | Field\Plant A\JB-103 | Field\Plant A\LT-102 | 15 |
| J1023 | Field\Plant A\JB-103 | Field\Plant A\PT-107 | 20 |
| J1024 | Field\Plant A\JB-103 | Field\Plant A\PT-119 | 30 |
| J1033 | Field\Plant A\TT-103 | Field\Plant A\JB-101 | 25 |
| J1034 | Field\Plant A\FT-108 | Field\Plant A\JB-101 | 25 |
| HR1 | Field\Plant B\Fieldbus Panel | Field\Plant B\JB-201 | 120 |
| HR2 | Field\Plant B\Fieldbus Panel | Field\Plant B\JB-204 | 60 |
| HR2.1 | Field\Plant B\JB-204 | Field\Plant B\JB-203 | 90 |
| J1035 | Field\Plant A\LV-120\SV-120 | Field\Plant A\LV-120\JB-106 | 95 |
| J1036 | Field\Plant A\LV-120\ZSO-120 | Field\Plant A\LV-120\JB-106 | 20 |
| J1037 | Field\Plant A\LV-120\ZSC-120 | Field\Plant A\LV-120\JB-106 | 20 |
| J1042 | Field\Plant C\JB-410 | Field\Plant C\ZS-405 | 20 |
| J1043 | Field\Plant C\JB-410 | Field\Plant C\ZS-406 | 20 |
| J1044 | Field\Plant C\JB-410 | Field\Plant C\ZS-407 | 20 |
| J1028 | Field\Plant B\JB-202 | Field\Plant B\FT-210 | 20 |
| J1029 | Field\Plant B\JB-202 | Field\Plant B\FT-211 | 20 |
| J1030 | Field\Plant B\JB-202 | Field\Plant B\FV-210\FY-210 | 20 |
| HR2.1 | Field\Plant B\JB-202 | Field\Plant B\JB-201 | 20 |
| J1051 | Field\Plant B\LSHH-101 | Field\Plant A\JB-104 | 20 |
| J1052 | Field\Plant B\LSLL-102 | Field\Plant A\JB-104 | 20 |
| J1053 | Field\Plant B\PSH-101 | Field\Plant A\JB-104 | 20 |
| J1054 | Field\Plant B\TS-101 | Field\Plant A\JB-104 | 20 |
| J1055 | Field\Plant A\LV-120\LY-120 | Field\Plant A\JB-107 | 20 |
| J1056 | Field\Plant A\TV-103\TY-103 | Field\Plant A\JB-107 | 20 |
| J1057 | Field\Plant A\FV-110\FY-110 | Field\Plant A\JB-107 | 20 |

Fill Down
Fill Series
Inherit
Override
Protect
Unprotect
Σ Sum

Total up the lengths.



In this case there is a total of 1027m of this cable type in the project model.